

SIDE DOOR ADAPTER



APPLICATION

ProLine G2 Side Door Adapters allow the mounting of a standard door to the side of the enclosure. When mounted to the enclosure, they maintain enclosure environmental integrity.

SPECIFICATIONS

- 14 gauge (1.75 mm) steel
- All mounting hardware included
- EMC Side Door Adapters are plated to provide corrosion resistance while maintaining a metal-to-metal contact
- Longer lead times required for EMC items

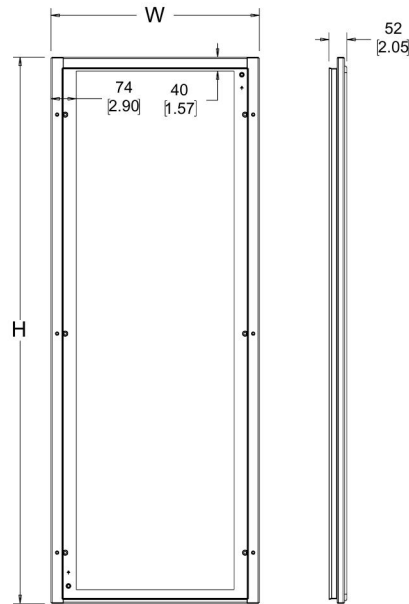
FINISH

- Polyester powder paint; RAL 7035 textured light gray standard
- Custom colors available

BULLETIN: P40

Standard Product

Catalog Number	H (mm)	H (in.)	W (mm)	W (in.)	Fits Frame HxW (mm)	Description
P2DA125	1183	46.6	504	19.8	1200 x 500	Painted
P2DA126	1183	46.6	604	23.8	1200 x 600	Painted
P2DA128	1183	46.6	804	31.7	1200 x 800	Painted
P2DA145	1383	54.4	504	19.8	1400 x 500	Painted
P2DA146HF	1383	54.4	604	23.8	1400 x 600	EMC
P2DA148	1383	54.4	804	31.7	1400 x 800	Painted
P2DA164	1583	62.3	404	15.9	1600 x 400	Painted
P2DA165	1583	62.3	504	19.8	600 x 500	Painted
P2DA166	1583	62.3	604	23.8	1600 x 600	Painted
P2DA168	1583	62.3	804	31.7	1600 x 800	Painted
P2DA184	1783	70.2	404	15.9	1800 x 400	Painted
P2DA185	1783	70.2	504	19.8	1800 x 500	Painted
P2DA186	1783	70.2	604	23.8	1800 x 600	Painted
P2DA186HF	1783	70.2	604	23.8	1800 x 600	EMC
P2DA188	1783	70.2	804	31.7	1800 x 800	Painted
P2DA204	1983	78.1	404	15.9	2000 x 400	Painted
P2DA205	1983	78.1	504	19.8	2000 x 500	Painted
P2DA206	1983	78.1	604	23.8	2000 x 600	Painted
P2DA206HF	1983	78.1	604	23.8	2000 x 600	EMC
P2DA208	1983	78.1	804	31.7	2000 x 800	Painted
P2DA2010	1983	78.1	1004	39.5	2000 x 1000	Painted
P2DA225	2183	85.9	504	19.8	2200 x 500	Painted
P2DA226	2183	85.9	604	23.8	2200 x 600	Painted
P2DA226HF	2183	85.9	604	23.8	2200 x 600	EMC
P2DA228	2183	85.9	804	31.7	2200 x 800	Painted
P2DA2210	2183	85.9	1004	39.5	2200 x 1000	Painted



89143345

Model	Component	Type	Height	Depth	Specialty	Catalog Number
P2	D	A	20	6	Blank	= P2DA206
PROLINE G2	Door	Blank = single door O = double door W = window door A = side door adapter DR = disconnect right DL = disconnect left DR2 = disconnect right large cutout F = dress frame	mm 22 = 2200 20 = 2000 18 = 1800 16 = 1600 14 = 1400 12 = 1200 10 = 1000 8 = 800 6 = 600	mm 10 = 1000 8 = 800 6 = 600 5 = 500 4 = 400	Blank = standard HF = EMC protected	

NOTE: Not every combination is available as a standard product.

DOOR STOP KIT



APPLICATION

The Door Stop Kit is used for modular enclosures and holds doors open at 130 degrees.

FEATURES

- High-performance, 3/8-in. (9.5 mm) aluminum stop arm
- DELRIN® gliders for smooth actuation
- BV-M6 fasteners to attach the door stop to the frame and door

SPECIFICATIONS

- 10 gauge (3.0 mm) steel slotted slider bracket
- Mounts without drilling
- Kit includes a slotted slider bracket that mounts to the top or bottom of the door and a stop arm that attaches to the frame
- All necessary mounting hardware included

BULLETIN: P40

Catalog Number	Description
P2ADSK	ProLine G2 Door Stop Kit

180-DEGREE HINGE KIT

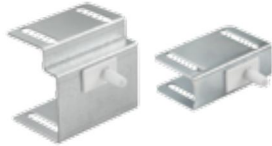


Hinge option for modular enclosure doors to provide up to a 260-degree door opening on single-door enclosures.

BULLETIN: P40

Catalog Number	Description
P2AH180	ProLine G2 180-Degree Hinge Kit

REMOTE DOOR SWITCHES



- The remote door switch can activate a light or other electrical component when the enclosure door is opened

- Mounts on enclosure frame and includes mounting hardware
- Mounting plate is 14 gauge steel with a plated finish
- Can be hard-wired to the Panelite LED or Fluorescent light or connected via the Panelite Door Switch Cable

BULLETIN: A80LT, P20

Catalog Number	Description
ALFSWD	Door switch assembly (order connection cable separately)
PLFSWD	Door switch assembly for ProLine and ProLine G2 (order connection cable separately)

DOOR SUPPORT ROLLER KIT

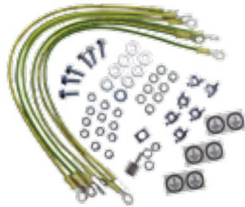


The PROLINE G2 Door Support Roller Kit supports and aligns heavy doors. It is suitable for all solid and window doors.

BULLETIN: P40

Catalog Number	Description
P2ADRK	PROLINE G2 Door Support Roller Kit

PROLINE GROUNDING KIT



The Grounding Kit allows a ProLine or ProLine G2 enclosure to be grounded to VDE specifications. Includes six 12-gauge wires 411 mm (16.19) long with ring terminations and M6 mounting hardware.

BULLETIN: P20

Catalog Number	Wire Size	Length Between Ring Terminals mm/in.	Ring Terminal Hole Diameter mm/in.
PGK	12 ga.	411 16.19	7 .29

GROUNDING PLATE KIT



The Grounding Plate Kit effectively grounds ProLine or ProLine G2 covers to the frame. The kit consists of one bracket designed to ground the rear cover, a set of brackets to ground the top and side covers, and hardware to secure the brackets to the frame. The brackets are constructed from 24 gauge 304 stainless steel.

Please note that if electrical devices are to be installed on the cover(s), grounding wires are required as defined in NFPA 79. It is recommended to use Grounding Kit PGK under these circumstances.

BULLETIN: P40

Standard Product

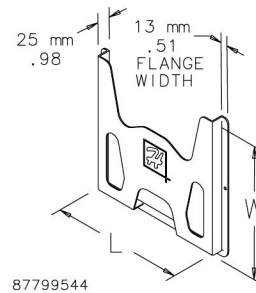
Catalog Number	Description
P2AGPK	Grounding Plate Kit

DATA POCKETS



Provides a convenient place to store wiring diagrams, operation manuals and other documentation inside the enclosure. Adhesive-backed pockets mount inside the solid enclosure cover. Mounting hardware included. Thermoplastic pockets are black and have cut-away areas for easy inspection of contents.

BULLETIN: A80DP



Catalog Number	Description	L in./mm	W in./mm
ADP1	Small pocket	6.00 152	6.00 152
ADP2	Large pocket	12.00 305	12.00 305

Use ADP2 when A = 24 and B = 30

STEEL DATA POCKET



FINISH

- Polyester powder paint; RAL 7035 textured light gray standard
- Custom colors available

BULLETIN: P40

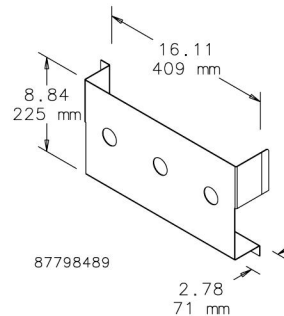
Catalog Number	Description
P2ADPS1	Steel Data Pocket

APPLICATION

Provides a convenient place to store wiring diagrams, operation manuals and other documentation inside the enclosure.

SPECIFICATIONS

- Steel Data Pocket fastens to the bottom of the door
- Door Bar Grid Straps (purchased separately) must be used to change the vertical mounting position of the data pocket



FOLDING SHELF



SPECIFICATIONS

- Mounts to door using Door Bar Grid Straps (sold separately)
- Locks in two positions - 90 degrees as a shelf and 15 degrees as a writing surface.
- Holds up to 30lb (13.6kg)
- 16 gauge steel with 12 gauge brackets

FINISH

- Polyester powder paint; RAL 7035 textured light gray standard
- Custom colors available

BULLETIN: P20

Catalog Number	Description
PSHDM	Fits door widths 600, 700, 800 and 1000 mm

APPLICATION

The folding shelf can be used on the exterior or the interior of a door to provide a convenient surface for computers, tools or paperwork.

DOOR BAR GRID STRAPS



APPLICATION

The ProLine G2 Door Bar Grid Straps are used to mount accessories to the door.

SPECIFICATIONS

- Straps mount to the door bar
- Load rating: 100 lbs (45.4 kg)
- 16 gauge (1.5 mm), mild steel

FINISH

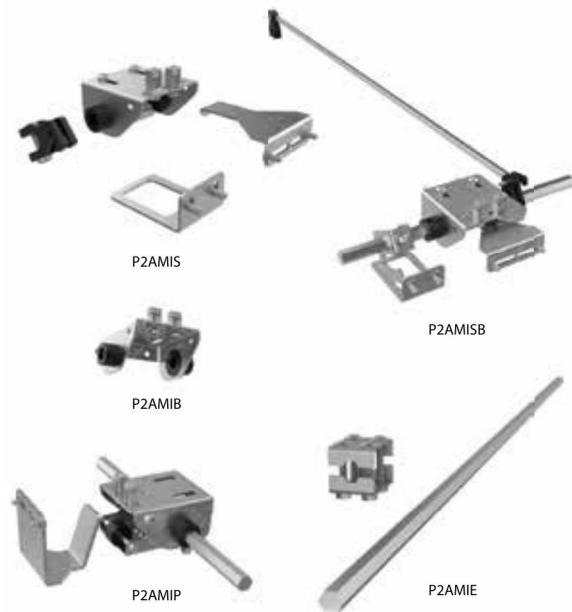
- Plated

BULLETIN: P40

Catalog Number	W mm/in.	Fits Frame Width mm
P2GD4	308 12.1	400
P2GD5	408 16.1	500
P2GD6	508 20.0	600
P2GD7	608 23.9	700
P2GD8	708 27.9	800
P2GD9	808 31.8	900
P2GD10	908 35.7	1000

Frame Width dimensions are nominal mm.

PROLINE G2 MECHANICAL INTERLOCK



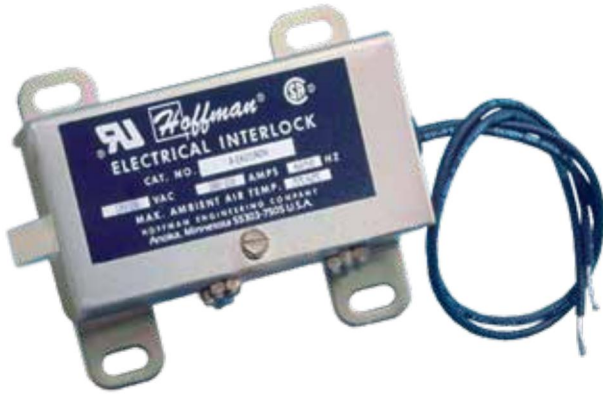
The Mechanical Interlock solution and associated components have been redesigned to simplify installation and increase operator safety. The solution is based around a 1/2-in (~13 mm) Aluminum Hex Rod, which feeds through door actuators positioned only at the top of the enclosure(s). The door-mounted activator brackets engage with the actuator(s), also installed in series is a hook and capture system: the combination of actuator and hook increases safety by preventing system re-energization without closure of all secondary doors and the primary door.

The components can be combined to safely interlock any number of enclosure configurations, including applications where a rear door or series of doors are present. Note that interlock components will work with all door options (solid single, overlapping double, window, and disconnect), mounting on the upper door bar near the center to provide maximum security. Consult installation instructions to determine which components would be required to safely interlock a defined solution.

BULLETIN: P40

Catalog Number	Description
P2AMIP	Primary Door Kit
P2AMIS	Secondary Door Kit
P2AMISB	Secondary Door Kit, Back
P2AMIE	Extension Kit, Standard
P2AMIEL	Extension Kit, Long
P2AMIB	Support Bracket

ELECTRICAL INTERLOCK



1. Two-Door Enclosures for Flange-Mounted Disconnects, Type 12
2. Heavy Duty Free-Stand Enclosures for Flange-Mounted Disconnects, Type 12
3. Modular Enclosures for Flange-Mounted Disconnects, Type 12
4. Multi-Door Enclosures, Type 12

The interlocks will also fit most Hoffman custom enclosures with door latching mechanisms similar to the mechanisms used on the preceding enclosures.

Non-NDH style electrical interlocks will not fit Concept Enclosures or Bulletin A25 and A26 Enclosures. Interlocks are not designed to be used in place of the standard door or cover latch.

Catalog numbers AEK115NDH, AEK230NDH and AEK460NDH are designed to be used on some Hoffman enclosures and boxes which have exterior latching only. When energized, these interlocks will prevent the enclosure door from being opened. They fit on the door or cover of the following enclosures:

1. One-door Type 4 and 4X enclosures
2. Two-door Type 4 and 4X enclosures
3. One-door Type 12 enclosures
4. Larger sizes of junction boxes
5. Type 1 and large Type 1 enclosures

The above interlocks also fit in most Hoffman custom enclosures and boxes which have doors or covers hinged similar to doors or covers on the preceding enclosures.

INDUSTRY STANDARDS

UL Component Recognized

CSA Certified

APPLICATION

Provides positive internal safety lockout on electrical enclosures while the equipment is energized. Catalog numbers AEK115, AEK230 and AEK460 are used with standard Hoffman door latching mechanisms. When energized, these interlocks prevent the door handle from being turned to open the door. The interlock fits either clockwise or counterclockwise handles in the following enclosures:

1. All two-door Type 4 and 12 enclosures
2. All Type 4X with 3-point latch enclosures
3. Free-stand Type 12 enclosures
4. All single-door Type 12 enclosures with latch kits installed

The above interlocks will fit the following enclosures, but modifications are required. Consult the factory for more information.

Installation

Interlock mounts on bracket attached to door bar on inside of enclosure door.

SPECIFICATIONS

- Rugged steel construction and plated finish. Solenoids are rated for continuous duty and will stand up under heavy industrial use.
- Packaged complete with a solenoid assembly, mounting bracket and instructions for field installation.

Door handles and latching mechanisms are not included.

BULLETIN: P20DC

Catalog Number	A @ 120 V/60 Hz Normal/Inrush	A @ 240 V/60 Hz Normal/Inrush	A @ 480 V/60 Hz Normal/Inrush	A @ 110 V/50 Hz Normal/Inrush	A @ 220 V/50 Hz Normal/Inrush	A @ 440 V/50 Hz Normal/Inrush
PEK115NDH	.100/.63			.120/.69		
PEK230NDH		.050/.32			.060/.35	
PEK460NDH			.025/.16			.030/.18

